



# Kevin Henry

[www.kevinhenry.co.uk](http://www.kevinhenry.co.uk)

Incorporating: Fine Property Collection

Kevin Henry • 1 Market Street, Saffron Walden, Essex CB10 1JB • Telephone: 01799 513632 • sales@kevinhenry.co.uk • www.kevinhenry.co.uk



21, North End Road,  
Hinxtton, Cambs, CB10 1RE

LUXURY, LUXURY, LUXURY! This 3 bedroom village residence has been enhanced and improved to an exceptional level and is yours to rent for £1,000 per month. Fabulous kitchen, beautiful living areas, sun decks, plunge pool, gymnasium, top class bathroom. MUST BE SEEN. Absolutely brilliant!

- n Fantastic Kitchen
- n 3 Double Bedrooms
- n Magnificent Living Room
- n Family Room with doors onto decking
- n Plunge Pool & Gymnasium
- n Large Garden



To Let - House - Semi-Det. - Unfurnished  
£1000

[www.kevinhenry.co.uk](http://www.kevinhenry.co.uk)

[www.rightmove.co.uk](http://www.rightmove.co.uk)

[www.home-sale.co.uk](http://www.home-sale.co.uk)

[www.thinkproperty.com](http://www.thinkproperty.com)



Fine Property Collection is presented by Kevin Henry Estate Agents, Saffron Walden, a company with a proven sales record in your area



Independent financial advice provided by MPI Services 01799 520090. MPI Services is authorised and regulated by the Financial Services Authority

## **THE ACCOMMODATION COMPRISES**

### **FRONT DOOR TO**

### **ENTRANCE PORCH:**

Door to:

### **KITCHEN / BREAKFAST ROOM:**

Contemporary staircase off, state of the art lighting, fully fitted kitchen with granite worksurfaces incorporating one-and-a-half bowl sink, Rangemaster range cooker with extractor hood over, built-in dishwasher.



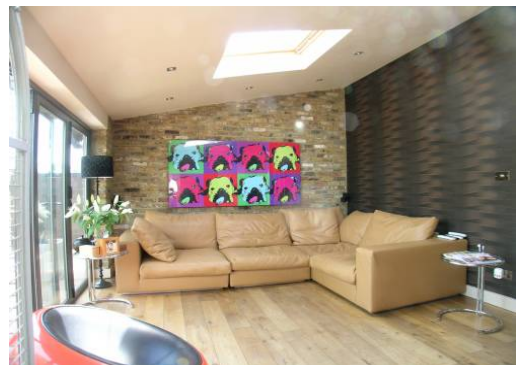
### **LIVING / DINING ROOM**

With wood flooring, feature open fireplace, shelving, funky radiators.



### **FAMILY ROOM:**

Original wooden flooring, Velux skylights, feature brick wall, concertina doors leading to sundeck, two further doors - one leading to wet room cloakroom, the other leading to the utility room.



### **FIRST FLOOR LANDING:**

**BEDROOM 1:**

Window to front aspect, built-in wardrobe cupboards to one wall.



**BEDROOM 2:**

1"

Windows to side and rear aspects, built-in wardrobe cupboard.



**BEDROOM 3:**

Windows to side and rear aspect, built-in wardrobe cupboards.

**BATHROOM:**

Luxury bathroom comprising freestanding tub bath, His 'n' Hers washbasins with drawers under, low-level WC, double shower.



**OUTSIDE:**

To the front of the property gates lead to the gravelled parking area for 3 vehicles. There is side access to the rear garden, a particular feature of the property, being of a good length and everybody's dream with sundecking patios, vegetable gardens, plunge pool, gymnasium and kennels. The property back onto open countryside.



**VIEWING ARRANGEMENTS**

Through the agents Kevin Henry, 1 Market Street, Saffron Walden, Essex, CB10 1JB.  
Telephone: 01799 513632. [www.kevinhenry.co.uk](http://www.kevinhenry.co.uk)

**COUNCIL TAX:**

Band D.